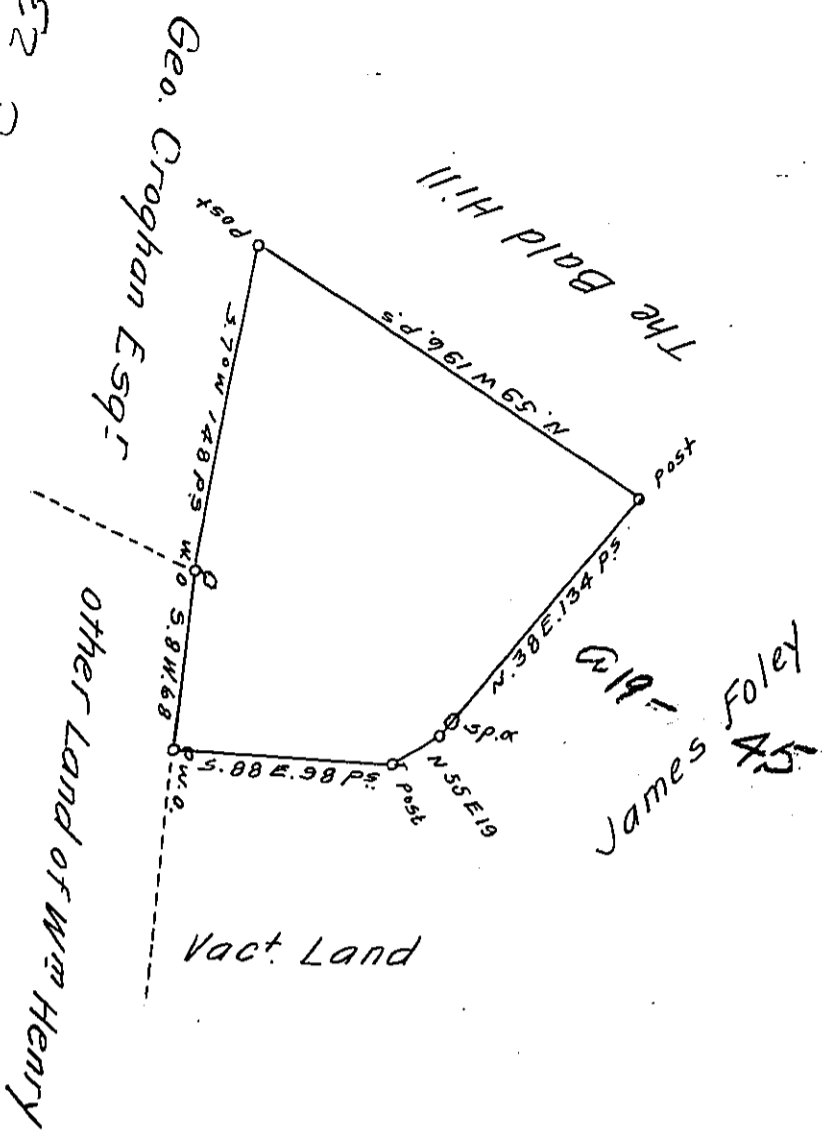


61-32  
C 23-179

Pg 422



In pursuance of a Warrant dated the 8<sup>th</sup> day of September 1766. Surveyed the 26<sup>th</sup> day of September 1767 for William Henry the above described Tract of Land. situate in Poplar Valley below the Snake Spring in the County of Cumberland. containing one hundred and fifty acres and a quarter and the usual allowance of six acres & 1/4 for Roads &c

& Richard Tea. Dep<sup>y</sup> Survey<sup>r</sup>

To John Lukens Esq<sup>r</sup> Surveyor General.

now Bedford County.

IN TESTIMONY that the above is a copy of the original remaining on file in the Department of Internal Affairs of Pennsylvania, made conformably to an Act of Assembly approved the 16th day of February, 1833, I have hereunto set my Hand and caused the Seal of said Department to be affixed at Harrisburg, this seventeenth day of April 1911.

*Nancy Houck*  
Secretary of Internal Affairs.